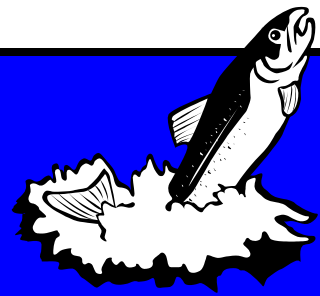


Brule River

Sportsmen's Club, Inc.



August 2024

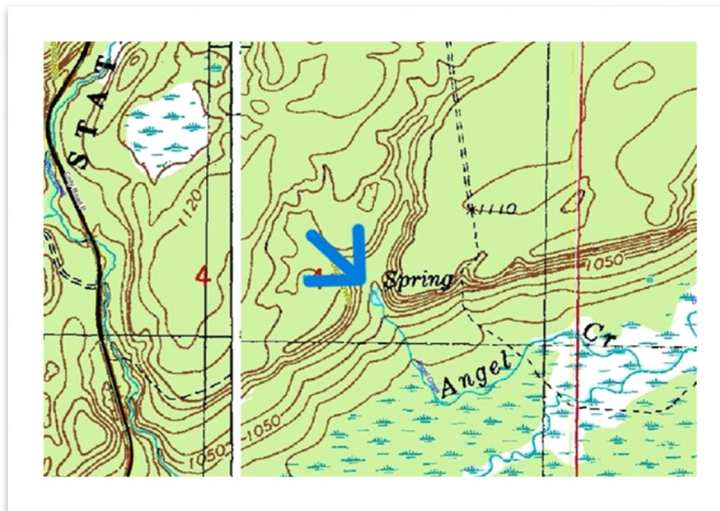
OVER 500 MEMBERS DEDICATED TO THE IMPROVEMENT AND PRESERVATION OF THE BRULE

Summer 2024 Trout Habitat Projects

by Dennis Pratt

We conducted two volunteer trout habitat workdays in 2024: Wednesday, July 24, and Thursday, August 1. On both days, we worked during the morning hours and enjoyed a Club-provided lunch at the Upper St. Croix boat launch.

On day one, a dozen members gathered and drained the manmade pond at the head end of Angel Creek. This pond was built nearly a century ago by the then landowner Charles Landberg. He used the pond to culture minnows that he used on his guide trips in the upper reaches of the Brule. The pond was harming



the trout habitat of Angel Creek by warming its waters. Connecting the small springs directly with the Creek now provides a temperature suitable for trout year-round.

On the second day, twelve volunteers worked to complete adding the stored spawning gravel to the East Fork spawning area first created by DNR in the late 1990's. At the completion of that original work ten yards of spawning gravel was stored streamside for future additions. In 2021, we added a little over half of the pile and

this year we placed the remainder in the spawning area.



July 24 Volunteers

Bill Blust	Ben Fromm
Jim Waletzko	Jerry Filozi
Glen Hill	Dan Kephart
Tim Spangenberg	Mike Zicus
Mike Sierszen	Jeff Stollenwerk
Sam Fromm	Dennis Pratt



August 1 Volunteers

Glen Hill	Sam Peterson
Jim Waletzko	Mike Sierszen
Mike Zicus	Monty Hoffman
Douglas Anderson	Tim Spangenberg
Jerry Filozi	Bill Blust
Reed Kostelny	Dennis Pratt



BRSC Calendar:

The board meeting will be held on
Monday, August 26, at the KroBar at 6:00 p.m.





Brule River Sportsmen's Club Electronic Meeting Minutes July 22, 2024



President Dennis Pratt called the meeting to order at 6:00 p.m. at Kro Bar in Brule.

Officers and Directors: Present – Ed Chaplinski, Glen Hill, Courtney Johnson, Mick Killoren, Ken Lundberg, Dennis Pratt, Mike Sierszen, Dennis Smet, Walt Swanson, Jim Waletzko, Dean Wellman and Mike Zicus.

Minutes of the June meeting: The minutes as written in the July newsletter was approved following a motion by Mike Zicus, second by Courtney Johnson, and unanimous approval by voice vote.

Treasurer's and Financial Secretary's Reports: President Dennis Pratt reported for Treasurer Jeff Stollenwerk that June's beginning balance was \$12,340.50, and the ending balance was \$12,691.96 with the following expenses: JS – Fly Book (second printing by DocuCopies) \$499.02; JM Screen Printing (48 hats) \$672; Constant Contact (annual service) \$391.30; Transfer to Savings (May Donations) \$295; Katie Thompson (June newsletter) \$200; The First Impression Group (400 lower river maps) \$903.91. The Treasurer's report was approved following a motion by Ken Lundberg, second by Dean Wellman, and unanimous approval by voice vote. President Dennis Pratt reported for Financial Secretary Dean Wellman that there were \$2,415 in total deposits into the general fund since the last meeting and that the Club had 2 new members and 11 renewals. The Financial Secretary's report was approved following a motion by Ed Chaplinski, a second by Jim Waletzko and unanimous approval by voice vote.

Committee Reports

Legislative, Audit, Education and Social Media Committees: Nothing to report.

Habitat: Dennis Pratt – The plan is to meet at 9:00 a.m. on Wednesday July 24 at Palmer's Landing then a short drive and walk to Swamp Angel Creek Dam. This will be a small project. Bring hip boots as the work will be in shallow water. Next project will be on August 1.

Scholarship: Mike Sierszen/Paul Helbach – Mike Sierszen introduced this year's College Scholarship recipient, Ben Fromm. Ben thanked the club for the scholarship and all the fund-raising work to support the scholarship. Ben talked about his familiarity with the Brule River, Forestry work over the last few years, and his future plans.

Membership: Jim Waletzko/Ed Chaplinski – Ed reported that his son and nephew took some newsletters to a fly shop in River Falls. Ed also took some to the Hayward fly shop.

Other Business

Family Fun Day Planning – Ken Lundberg – Angelica suggested having bigger nets for the fish pond plus tubs to keep trout out of the grass to reduce stress on the fish. We discussed locating additional volunteers.

Fly of the Month – Dean Wellman – Black Ghost Steamer by Paul Gausman.

Spring Raffle – Mike Sierszen – Discussion on ticket sales. 150 tickets sold so far. Dean and Mike are keeping track of all the sales. Remaining tickets are going fast.

Challenge Center Canoe Trip – Smet – We have enough drivers for Saturday July 27; however, people are still needed to assist clients into the canoes at Wild Cat and then out again at Winneboujou or the Ranger Station.

Upcoming Events – Please check our [Club Calendar](https://bruleriversportsmensclub.com/category/club-calendar/) at <https://bruleriversportsmensclub.com/category/club-calendar/> for the latest events.

The business meeting adjourned at 6:41 p.m.

Recorded by Walt Swanson

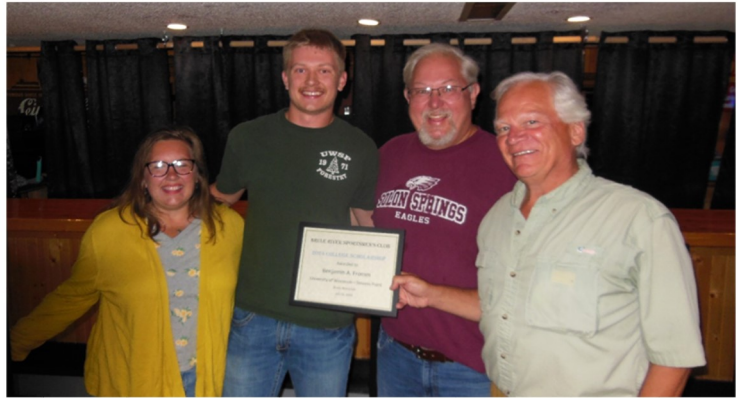


Scholarship News

by Mike Sierszen

The 2024 recipient of the Brule River Sportsmen's Club College Scholarship is Benjamin A. Fromm. Ben just concluded his sophomore year at UW-Stevens Point, majoring in Forest Management. He hails from Solon Springs, WI, where he grew up fishing, hunting, and hiking with his parents. Early connections with the Brule River include working for the Brule River Canoe Rental company in high school and clearing downed trees along the river to ensure safe passage for canoeists.

Ben is proud to call Solon Springs and the headwaters of the Brule his home, and he volunteers with the Solon Springs School District, taking young students on hikes along the historic Bois Brule – St. Croix Portage Trail. He is also an officer with the UW-Stevens Point student chapter of the Society of American Foresters, coordinating meetings among industry professionals, landowners, faculty, and students.



College Scholarship Committee Chair Mike Sierszen presents the 2024 college scholarship to Ben Fromm, pictured with his parents Julie and Eric.

Concurrent with his university studies, Ben works for the local family-owned Bell Timber Company, marking trees for timber sales on publicly and privately-owned properties. Ben hopes to make a career of sustainably managing forestland across northern Wisconsin.

Lake Superior Steelhead Association is holding their 10th Annual Spey Day

- Saturday, September 7, at McNeil's on the Brule River.
- Event starts at 11:00 a.m.
- Casting demo's, equipment vendors and opportunities for individual casting instruction will be offered. Lunch provided, bring your own beverage and a chair. Ed Ward will once again be the featured presenter.

For more information: [NEWS - Lake Superior Steelhead Association \(steelheaders.org\)](https://steelheaders.org)

Black Ghost Streamer

Paul Gausman - Somerset, WI

The Black Ghost Streamer was originated by Herbert L. Welch of Mooselookmeguntic Maine in 1927. It was a very productive fly that gained acceptance by anglers across the US and is a favorite of mine for the Brule River. I have many fond memories fishing feather-wing streamers on the small river sections between the upper "lakes," on canoe trips from Winneboujou to the "cabin," and on floats through the meadows. All are good water for swimming streamers around logs, log jams, tag alders and rocks. A favorite thing for me back in the day was to wet wade on a hot summer day around the cabin with one fly, and usually it was the Black Ghost. Browns eat this fly! A good set up was an 8½-foot to 9-foot fly rod and a weight forward floating line with a 7-9' leader.



A recipe for the fly can be found at <https://brulerriversportsmensclub.com/wp-content/uploads/2024/08/2024-Aug.pdf>.

BRSC Gift Store Order Form (prices include shipping & handling)			
#	Item	Cost	Total
	Lower river map poster of Brule (36"x24")	\$45	
	Women's baseball hat	\$25	
	Lower Brule River map	\$10	
	Upper Brule River map	\$10	
	Men's baseball cap (mesh back)	\$25	
	Framed Lower River Map (cannot be Shipped)	\$125	
<i>The Brule River Sportsmen's Club, Inc. is a tax-exempt organization defined by Chapter 501 (C) (3) of the IRS Tax Code.</i> https://brulriversportsmensclub.com/contact-us/join-the-club/			



What We Do:

Fisheries Habitat Projects — Club members and others volunteer during the summer months to restore features necessary for fish spawning, growing, and feeding.

Clean-ups — Keep the Brule clean and beautiful.

Monthly Membership Meetings — Frequently include guest speakers.

Monthly Newsletter — Helps generate understanding of fisheries and water quality, and keeps members and others informed about Club activities.

Scholarship Program — Provides financial support to students.

Newsletter editor: Katie Thompson (goirish@cheqnet.net)

BRSC Membership Form

Name _____
 Address _____
 City _____
 State _____ Zip _____ Phone _____
 e-mail _____

Membership Type: Renewal (due January 1st) New Membership

Email newsletter only: \$20 – Individual \$25 – Household

Paper newsletter only: \$30 – Individual \$35 – Household

Donations

College Scholarship \$ _____ Education \$ _____
 High School Scholarship \$ _____ Habitat \$ _____
 General \$ _____ Multiple \$ _____

Visit us online at www.brulriversportsmensclub.com

All information contained herein is confidential.
 All but \$1.00 of your membership dues is tax deductible.
 Donations are 100 percent tax deductible.

Officers	Board of Directors
President — Dennis Pratt — prattdd@charter.net Vice President — Ed Chaplinski Financial Secretary — Dean Wellman Recording Secretary — Walt Swanson Treasurer — Jeff Stollenwerk	Ken Lundberg Dennis Smet Paul Helbach Jim Waletzko Courtney Johnson Mike Sierszen Mick Killoren Mike Zicus Glen Hill Ken Zivic